



Since 2010, Focus on Stainless Steel & Metal Industry

We Move, We Peak.

PART 2

CARBON & COATED (GALVANIZED · GALVALUME · COLOR) STEEL



鼎丰金属制品有限公司
PEAK METAL PRODUCTS CO., LIMITED

ABOUT US

Peak Metal Products Co., Ltd is an outstanding Supplier, Exporter & Stockist of Stainless Steel and Metal Products, with development in China at year 2010. We distribute and export consistently high quality of Stainless and :

Carbon Steel Plate, Checkered Plate, CR Coil, Wire Rod,
Sections (Angle, H beam/IPE, Flat, Channel/UPN) Steel,
Coated steel: Galvanized, Galvalume, Prepainted & Tinplate.

Our products & services are popular in the markets both at home and abroad with high praise, support and trust of our customers, which are only based on continually improvement of the manufacturing processes, work environment and strict adherence to fair business ethics.

We provide materials from optimum quality in accordance with international standards like ASTM, JIS, GB, DIN, EN and BS, with Commercial, Deep Drawn, Alloy, Low Temperature and Pipeline grades.

Our sincerity and hard work has helped us to guarantee timely deliveries with high quality products in the reasonable pricing level. It is our force to manufacture products to suit the exact requirement of our client ranging from small industries to manufacturing units. If you are interested in any styles of our products, please feel free to contact us.

Peak Metal always takes the policy of "excellent quality, satisfactory service and favorable price". We warmly welcome and invite all of old and fresh customers come to negotiation and visit us. We would sincerely cooperate with you and create a better business styles together!



Carbon Steel Sheet, Checkered Plate, Wire Rod

Item	Standards	Grades	Dimensions (mm)	MOQ	Shipment
Hot Rolled Steel Sheet	SAE ASTM JIS GB	Q235/SS400/A36 A515(6) GR.70/ A387 GR.11/22/91	Thickness: 1.8-80 Width: 914-2500 Length: Customized	50MT/Size, 200MT/Order	Bulk Vessel & Container
Tear Drop Checkered Plate		Q235B/SS400/A36	Thickness: 2.5-10 Width: 914-1500 Length: Customized		
Wire Rod		SA1006/1008/1010/ 1020/Q195/Q235	Diameter: 5.0-12	200MT/Size, 500MT/Order	



Tear Drop Checkered Plate



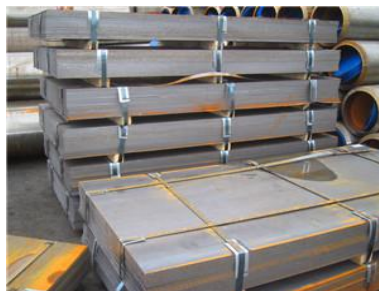
Hot Rolled Steel Coils



Deformed Bar / Rebar



Tear Drop Checkered Coils



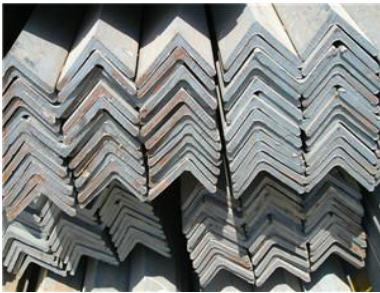
Hot Rolled Steel Sheets



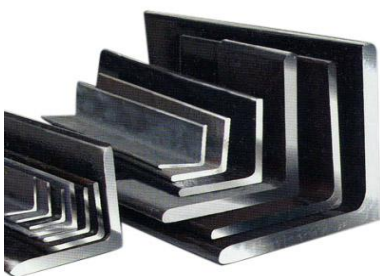
Steel Wire Rod Stock

Section (Angle, H beam, Flat, Channel) Steel

Item	Standards	Grades	Dimensions (mm)	MOQ	Shipment
Angle Bar	ASTM JIS GB EN	Q235B/SS400/ A36/S235JR/ Q345B	20x20x2.0 ~ 200x200x24	50MT/Size, 200MT/Order	Bulk Vessel & Container
IPE, H beam			100x100 ~ 800x300		
Flat Bar			20x2mm ~ 150x60mm		
UPN Channel			50x37x4.5 ~ 400x104x14.5		



Steel Angle Bar (Unequal)



Steel Angle Bar (Equal)



IPE, IPPE, H Beam



Steel Flat Bar



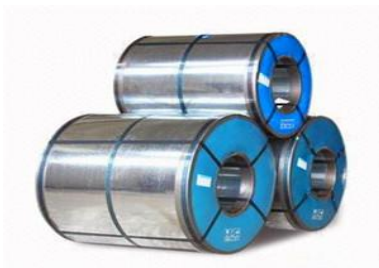
UPE, Steel Channel



Rail Steel Stock

Coated Steel (Galvanized, Galvalume, Color coils & Corrugated)

Item	Standards	Grades	Dimensions (mm)	Coating	App./Remarks
Galvanized Steel Coil	ASTM A653 JIS G3302 DIN EN 10326	CF/FS Type A.B SGCC DX51D+Z	Thickness: 0.14-4.0 Width: 600-1500	Z40~275	Piping Roof Corrugated Cut Sheet
55% Galvalume Steel Coil	ASTM A792M JIS G3322 EN 10327 EN 10326	CS Type A.B.C CGLCC DX(C)51D S250~550GD	Thickness: 0.2-2.0 Width: 600-1250	AZ60~150	Electrical app. Roof Coating use
Color Coated PPGI(PPGL) Coil	ASTM A653M JIS G3312 EN 10327 EN 10326	CS Type A.B.C CGCC TDX(C)51D S250~550GD	Thickness: 0.14-3.0 Width: 600-1500	Z40~275 (AZ60~150) Color: RAL Top: 10~25µm Back: 5-20µm	PE Film + Home app. Corrugated Roof
Tin Plate (Coil)	JIS G3303 ASTM A623M DIN EN 10203 ISO 11949	T1 T2 T2.5 T3 T3.5 T4 T5 DR7 DR8 DR9	Thickness: 0.15-0.5 Width: 260-1000 (Length:450-1200)	2.8/2.8 5.6/5.6 5.6/2.8 Customized	Food storage (Cans, cap); Chemicals (Gas cartridge, Paints can); Light industry



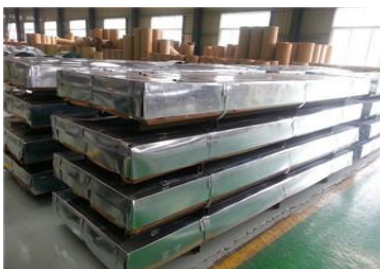
Galvanized Steel Coil



Pre-Painted (Color) Steel Coil



Color Corrugated Sheet



Galvalume Steel Sheet Packing



Pre-Painted Galvanized Steel Stock



Tinplate Coil in Packing



鼎丰金属制品(合肥)有限公司

PEAK METAL PRODUCTS CO., LIMITED

ADD: Rm 1306, No.339, Shizhu Rd, Hefei, Anhui, China.

TEL: +86-551-65587072 SKYPE ID: cnpeakmetal

EML: info@cnpeakmetal.com, cnpeakmetal@gmail.com